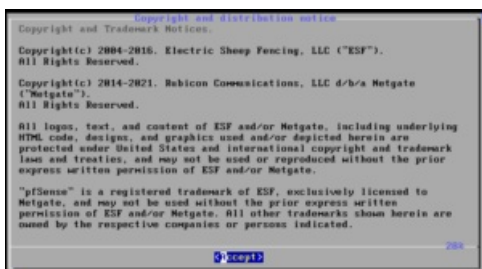


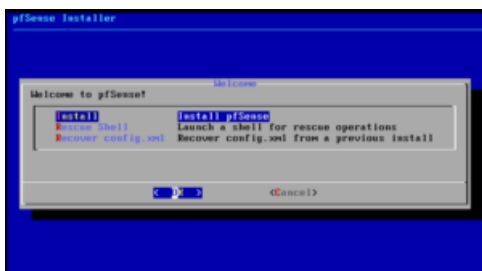
Installation

Je vous invite à télécharger l'ISO de PfSense sur le site : <https://www.pfsense.org/download/>

PfSense peut être installé sur une machine physique ou sur une machine virtuelle.
Pour ma part, il sera installé sur VMMware ESXi 6.5.



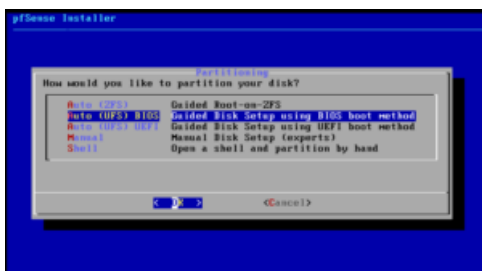
Le CLUF



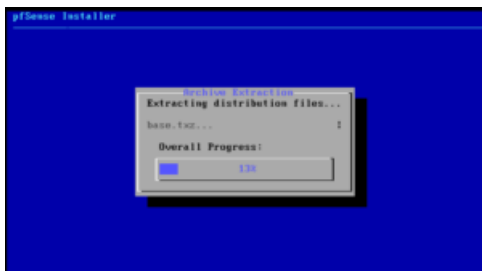
Sélectionner « Install »



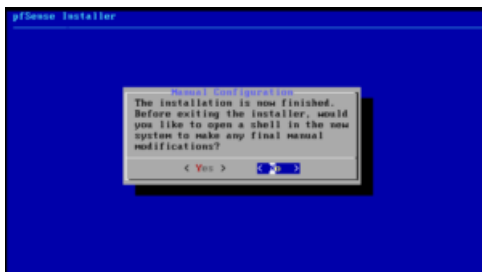
Choisir sa disposition de clavier



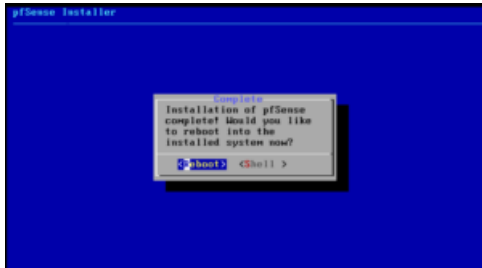
Choisir son type de système de fichiers



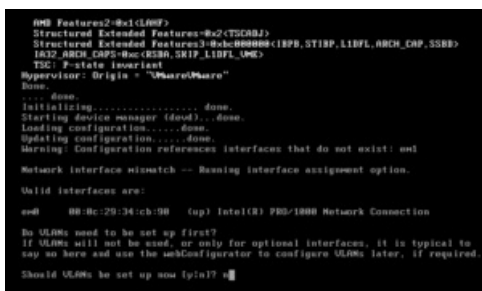
Patience...



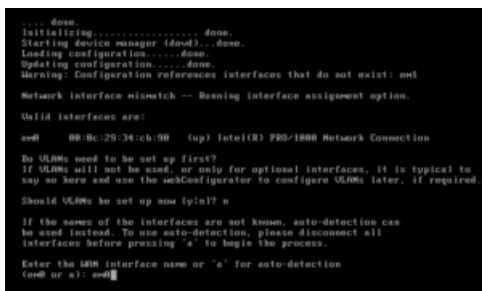
Sélectionner « No »



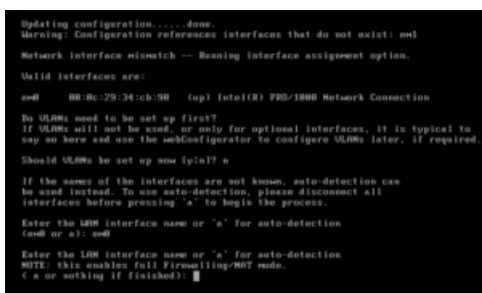
Sélectionner « Reboot »



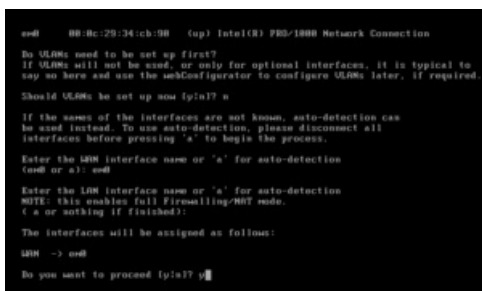
Ne pas configurer de Vlan



Introduire le nom de l'interface réseau



Presser « Enter »



Enter « Y »

```
Generating RRE graphs... done.
Starting syslogd... done.
Starting CRON... done.
pfSense 2.5.2-RELEASE amd64 Fri Jul 02 15:33:00 EDT 2021
Bootstrap complete

FreeBSD/amd64 (pfSense.hom.arpa) (ttyv0)

VMware Virtual Machine - Netgate Device ID: 73493e9476afad913055

*** Welcome to pfSense 2.5.2-RELEASE (amd64) on pfSense ***

M0N (man) -> n0B -> v0/DHCP4: 172.16.1.153/16

0) Logout (SSH only)          9) pfTop
1) Assign Interfaces          10) Filter Logs
2) Set interface(s) IP address 11) Restart webConfigurator
3) Reset webConfigurator password 12) PHP shell - pfSense tools
4) Reset to factory defaults 13) Update from console
5) Reboot system             14) Enable Secure Shell (sshd)
6) Halt system               15) Restore recent configuration
7) Ping host                 16) Restart PHP-FPM
8) Shell

Enter as option: 2
```

Sélectionner l'option 2 pour configurer l'adresse IP

```
VMware Virtual Machine - Netgate Device ID: 73493e9476afad913055

*** Welcome to pfSense 2.5.2-RELEASE (amd64) on pfSense ***

M0N (man) -> n0B -> v0/DHCP4: 172.16.1.153/16

0) Logout (SSH only)          9) pfTop
1) Assign Interfaces          10) Filter Logs
2) Set interface(s) IP address 11) Restart webConfigurator
3) Reset webConfigurator password 12) PHP shell - pfSense tools
4) Reset to factory defaults 13) Update from console
5) Reboot system             14) Enable Secure Shell (sshd)
6) Halt system               15) Restore recent configuration
7) Ping host                 16) Restart PHP-FPM
8) Shell

Enter as option: 2

Configure IPv4 address M0N interface via DHCP? (y/n) y
Configure IPv6 address M0N interface via DHCP? (y/n) n
Enter the new M0N IPv6 address. Press <ENTER> for none:
>
```

Je sélectionne l'option DHCP pour attribuer une IP

```
M0N (man) -> n0B -> v0/DHCP4: 172.16.1.153/16

0) Logout (SSH only)          9) pfTop
1) Assign Interfaces          10) Filter Logs
2) Set interface(s) IP address 11) Restart webConfigurator
3) Reset webConfigurator password 12) PHP shell - pfSense tools
4) Reset to factory defaults 13) Update from console
5) Reboot system             14) Enable Secure Shell (sshd)
6) Halt system               15) Restore recent configuration
7) Ping host                 16) Restart PHP-FPM
8) Shell

Enter as option: 2

Configure IPv4 address M0N interface via DHCP? (y/n) y
Configure IPv6 address M0N interface via DHCP? (y/n) n
Enter the new M0N IPv6 address. Press <ENTER> for none:
>
Disabling IPv4 DHCP...
Disabling IPv6 DHCP...

Do you want to revert to HTTP as the webConfigurator protocol? (y/n) y
```

Introduire « Y »

```
Restarting webConfigurator...

The IPv4 M0N address has been set to dhcp
You can now access the webConfigurator by opening the following URL in your web browser:
      http://dhcp/

Press <ENTER> to continue.
VMware Virtual Machine - Netgate Device ID: 73493e9476afad913055

*** Welcome to pfSense 2.5.2-RELEASE (amd64) on pfSense ***

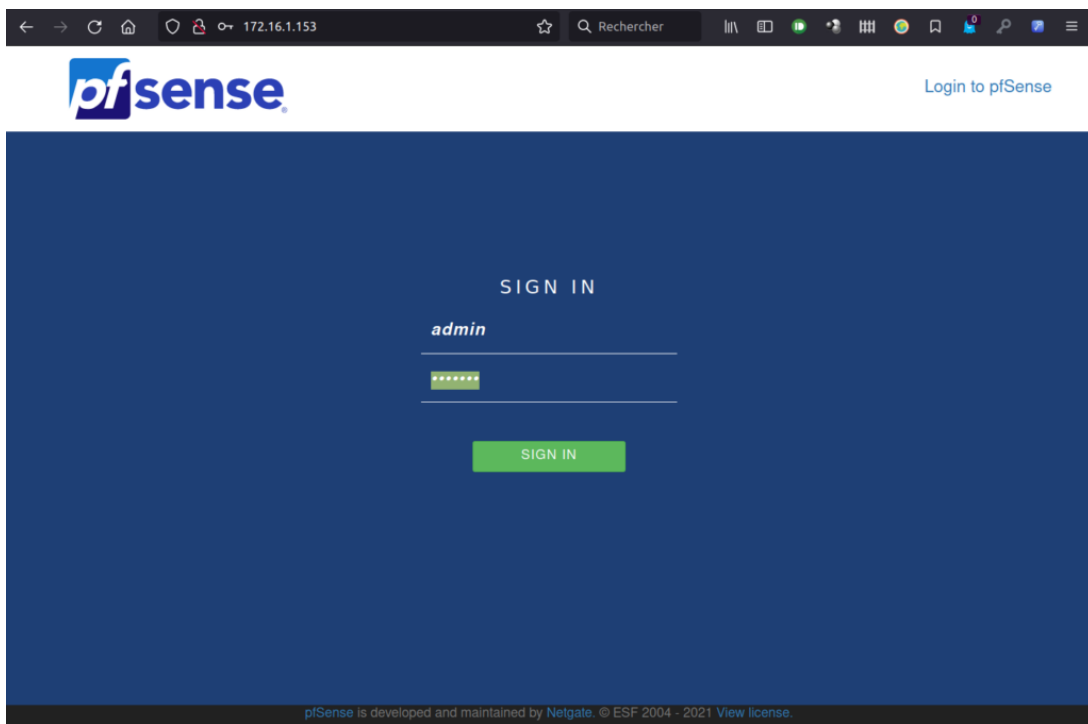
M0N (man) -> n0B -> v0/DHCP4: 172.16.1.153/16

0) Logout (SSH only)          9) pfTop
1) Assign Interfaces          10) Filter Logs
2) Set interface(s) IP address 11) Restart webConfigurator
3) Reset webConfigurator password 12) PHP shell - pfSense tools
4) Reset to factory defaults 13) Update from console
5) Reboot system             14) Enable Secure Shell (sshd)
6) Halt system               15) Restore recent configuration
7) Ping host                 16) Restart PHP-FPM
8) Shell

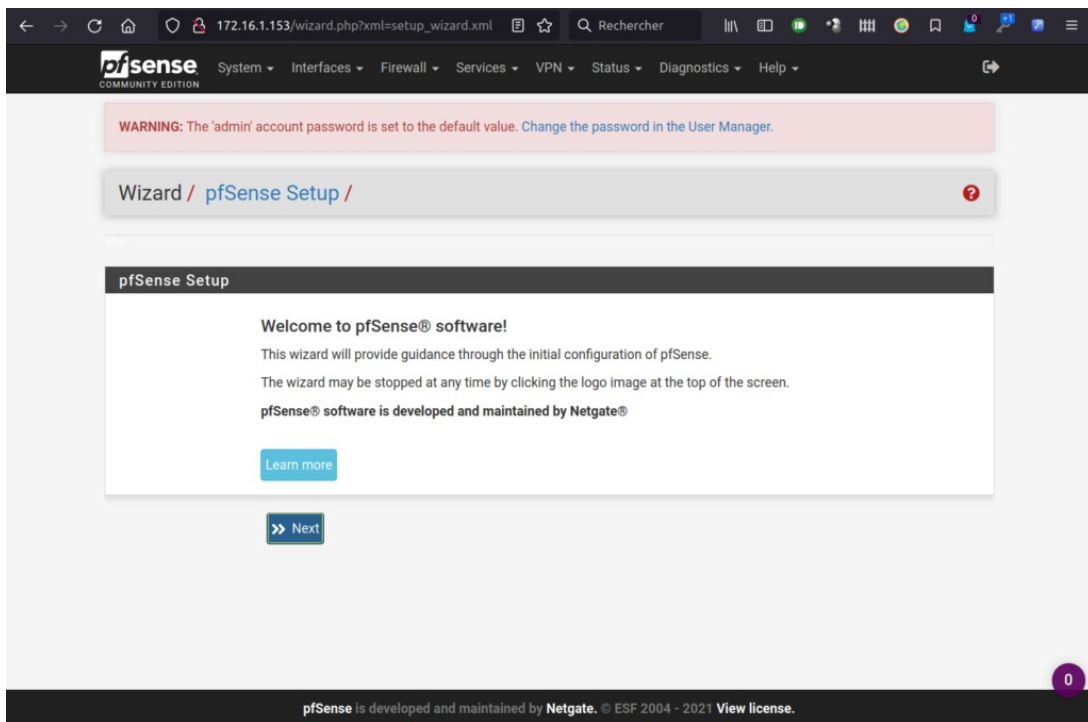
Enter as option: 
```

Et voilà

A présent, nous allons pouvoir passer via l'interface Web de management de PfSense via <http://<IP>> Pour Configurer PfSense et installer les packages nécessaires au fonctionnement du proxy.



Le login/password et admin/pfsense



« Next »

← → ↻ 172.16.1.153/wizard.php?xml=setup_wizard.xml ⌘ ⌕ Rechercher

pfSense COMMUNITY EDITION System ▾ Interfaces ▾ Firewall ▾ Services ▾ VPN ▾ Status ▾ Diagnostics ▾ Help ▾

WARNING: The 'admin' account password is set to the default value. [Change the password in the User Manager.](#)

Wizard / **pfSense Setup** / Netgate® Global Support is available 24/7 ?

Step 1 of 9

Netgate® Global Support is available 24/7

Our 24/7 worldwide team of support engineers are the most qualified to diagnose your issue and resolve it quickly, from branch office to enterprise – on premises to cloud.

We offer several support subscription plans tailored to fit different environment sizes and requirements. Many companies around the world choose Netgate support because:

- Support is available 24 hours a day, seven days a week, including holidays.
- Support engineers are located around the world, ensuring that no support call is missed.
- Our support engineers hold many prestigious network engineer certificates and have years of hands-on experience with networking.

[Learn more](#)

[» Next](#)

pfSense is developed and maintained by Netgate. © ESF 2004 - 2021 [View license.](#)

« Next »

← → ↻ 172.16.1.153/wizard.php?xml=setup_wiz... 90 % ⌘ ⌕ Rechercher

pfSense COMMUNITY EDITION System ▾ Interfaces ▾ Firewall ▾ Services ▾ VPN ▾ Status ▾ Diagnostics ▾ Help ▾

WARNING: The 'admin' account password is set to the default value. [Change the password in the User Manager.](#)

Wizard / **pfSense Setup** / General Information ?

Step 2 of 9

General Information

On this screen the general pfSense parameters will be set.

Hostname proxy
EXAMPLE: myserver

Domain home.local
EXAMPLE: mydomain.com

The default behavior of the DNS Resolver will ignore manually configured DNS servers for client queries and query root DNS servers directly. To use the manually configured DNS servers below for client queries, visit Services > DNS Resolver and enable DNS Query Forwarding after completing the wizard.

Primary DNS Server 192.168.1.1

Secondary DNS Server 192.168.1.2

Override DNS ☒
Allow DNS servers to be overridden by DHCP/PPP on WAN

[» Next](#)

pfSense is developed and maintained by Netgate. © ESF 2004 - 2021 [View license.](#)

Introduire le hostname, le domainet et les ip's des DNS

← → ↻ 172.16.1.153/wizard.php?xml=setup_wizard.xml 90% Rechercher

pfSense
COMMUNITY EDITION

System ▾ Interfaces ▾ Firewall ▾ Services ▾ VPN ▾ Status ▾ Diagnostics ▾ Help ▾

WARNING: The 'admin' account password is set to the default value. [Change the password in the User Manager.](#)

Wizard / pfSense Setup / Time Server Information ?

Step 3 of 9

Time Server Information

Please enter the time, date and time zone.

Time server hostname

Enter the hostname (FQDN) of the time server.

Timezone

>> Next

pfSense is developed and maintained by Netgate. © ESF 2004 - 2021 [View license.](#)

Choisir son serveur NTP et la timezone

← → ↻ 172.16.1.153/wizard.php?xml=setup_wizard.xml Rechercher

pptplocalsubnet

PPTP Remote IP Address

PPTP Dial on demand ☐ Enable Dial-On-Demand mode
This option causes the interface to operate in dial-on-demand mode, allowing a virtual full time connection. The interface is configured, but the actual connection of the link is delayed until qualifying outgoing traffic is detected.

PPTP Idle timeout
If no qualifying outgoing packets are transmitted for the specified number of seconds, the connection is brought down. An idle timeout of zero disables this feature.

RFC1918 Networks

Block RFC1918 Private Networks ☐ Block private networks from entering via WAN
When set, this option blocks traffic from IP addresses that are reserved for private networks as per RFC 1918 (10/8, 172.16/12, 192.168/16) as well as loopback addresses (127/8). This option should generally be left turned on, unless the WAN network lies in such a private address space, too.

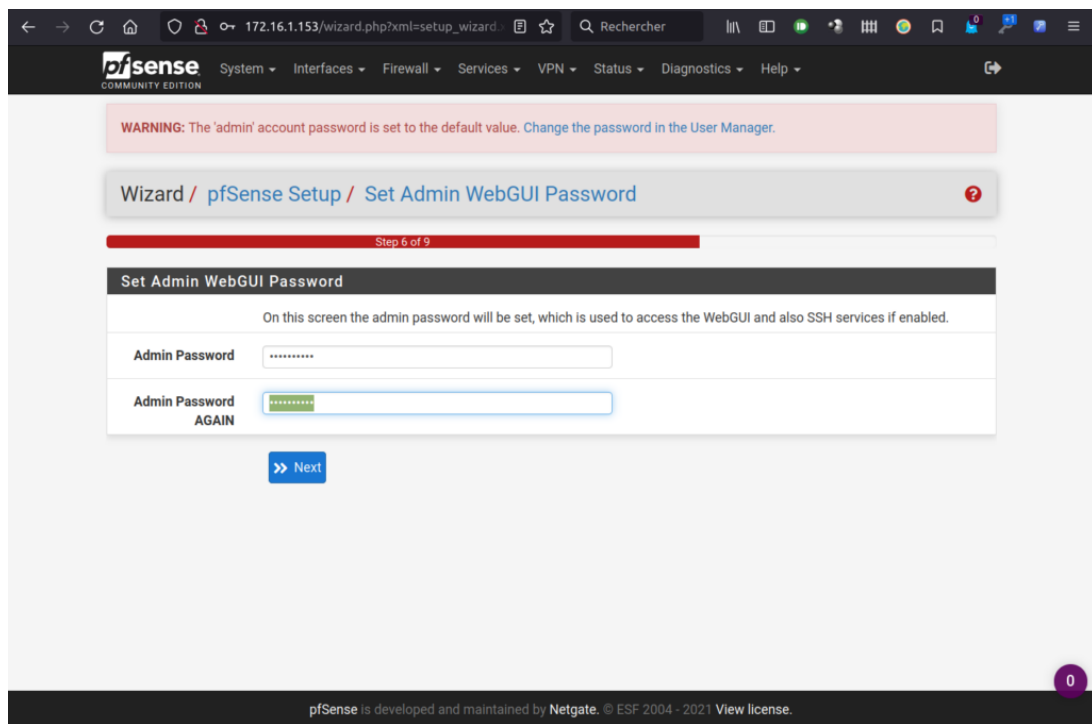
Block bogon networks

Block bogon networks ☐ Block non-Internet routed networks from entering via WAN
When set, this option blocks traffic from IP addresses that are reserved (but not RFC 1918) or not yet assigned by IANA. Bogons are prefixes that should never appear in the Internet routing table, and obviously should not appear as the source address in any packets received.

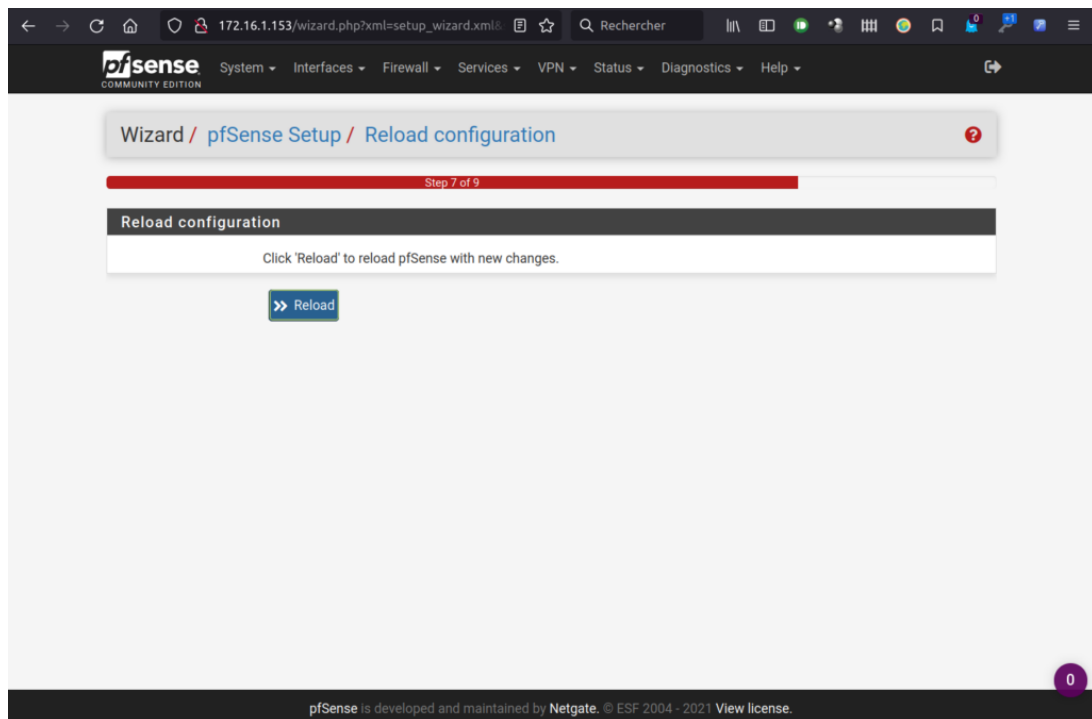
>> Next

pfSense is developed and maintained by Netgate. © ESF 2004 - 2021 [View license.](#)

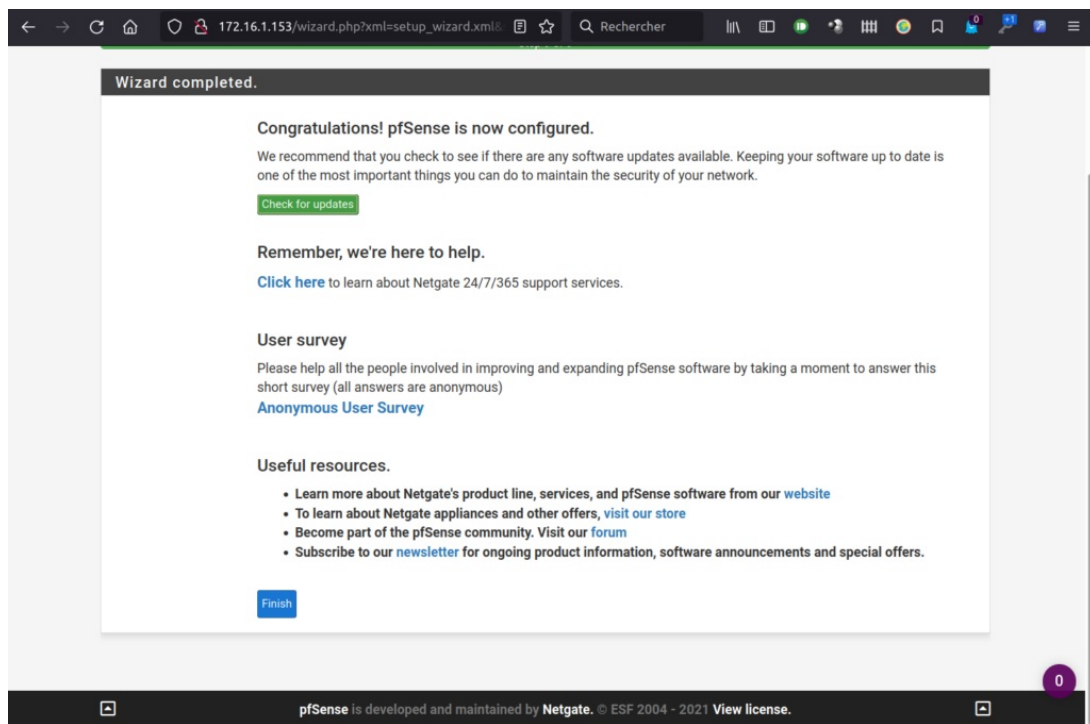
« Next »



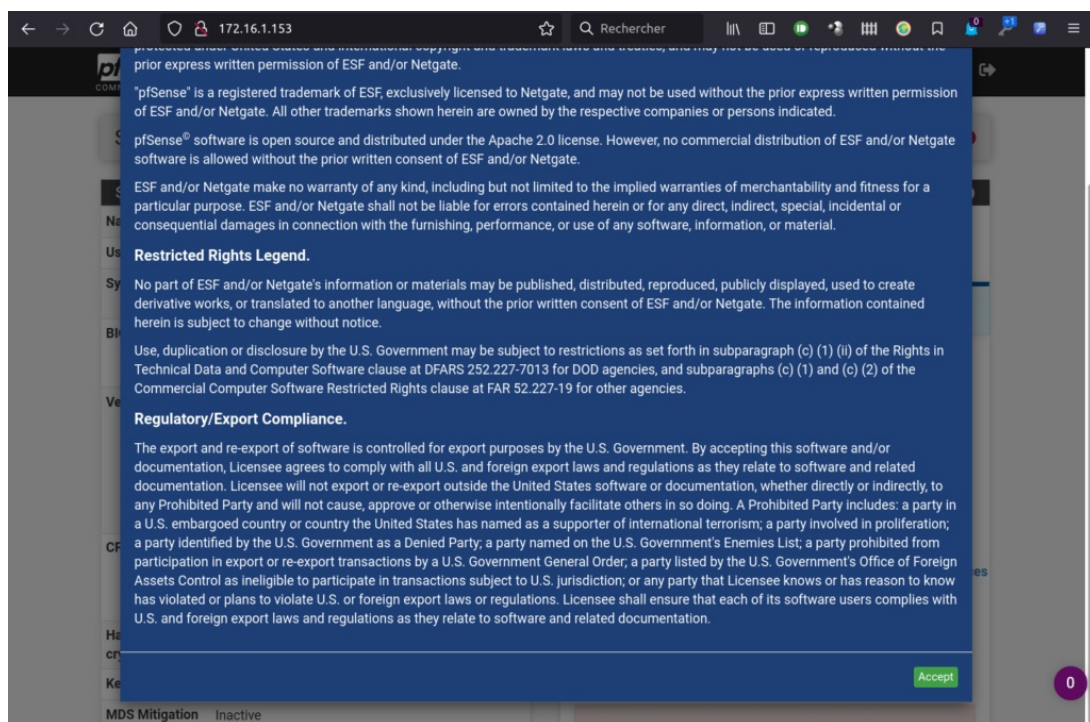
Introduire un nouveau mot de passe pour l'utilisateur « admin »



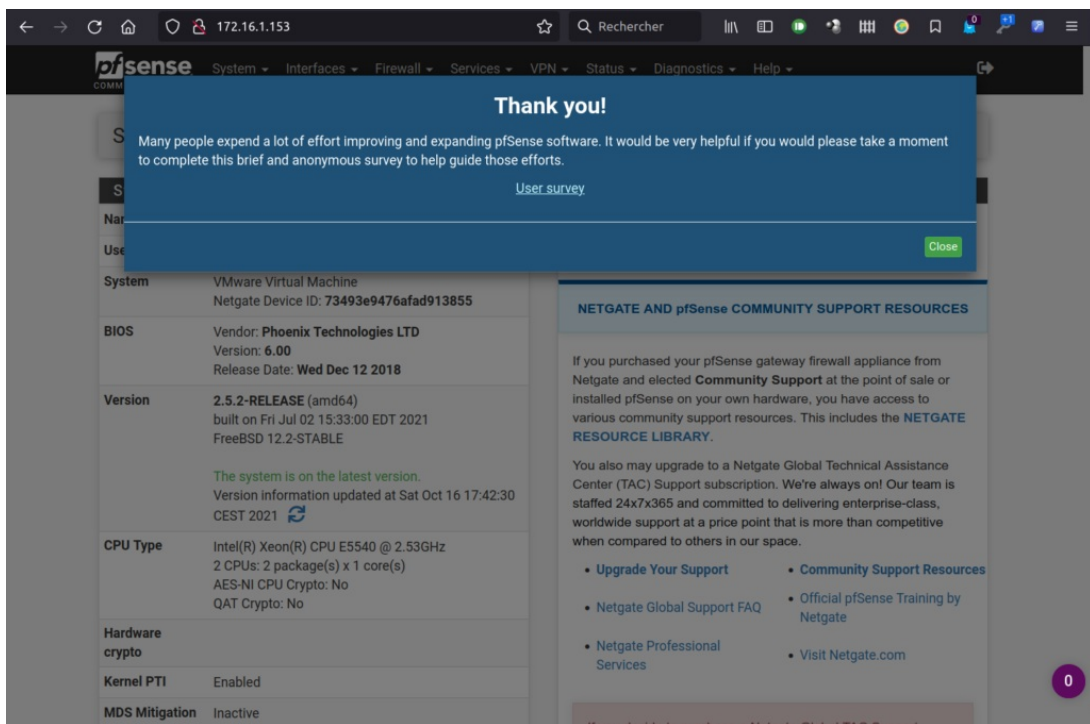
Cliquer sur « Reload »



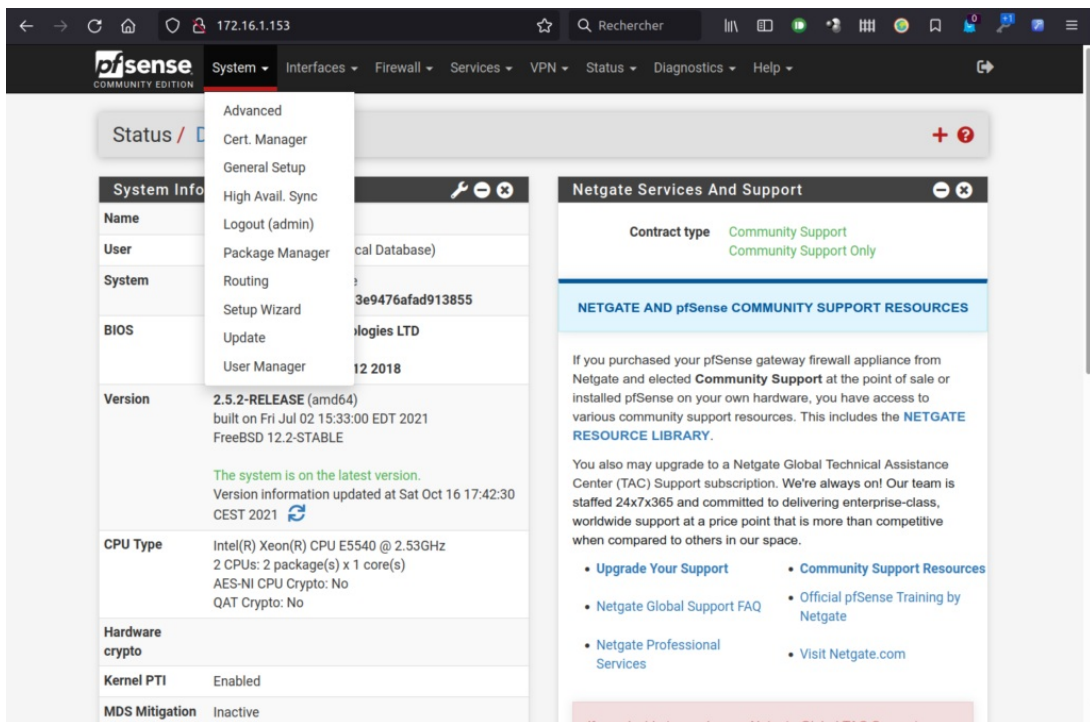
Cliquer sur « Finish »



« Accept »



« Close »



Sélectionner le « Package Manager »

pfSense COMMUNITY EDITION System Interfaces Firewall Services VPN Status Diagnostics Help

System / Package Manager / Available Packages

Installed Packages Available Packages

Search

Search term squid Both Search Clear

Enter a search string or *nix regular expression to search package names and descriptions.

Packages

Name	Version	Description	
Lightsquid	3.0.6_8	LightSquid is a high performance web proxy reporting tool. Includes proxy realtime statistics (SQStat). Requires Squid package.	+ Install
Package Dependencies: lighttpd-1.4.59 lightsquid-1.8_5			
squid	0.4.45_5	High performance web proxy cache (3.5 branch). It combines Squid as a proxy server with its capabilities of acting as a HTTP / HTTPS reverse proxy. It includes an Exchange-Web-Access (OWA) Assistant, SSL filtering and antivirus integration via C-ICAP.	+ Install
Package Dependencies: squidclamav-7.1 squid_radius_auth-1.10 squid-4.15 c-icap-modules-0.5.5			
squidGuard	1.16.18_20	High performance web proxy URL filter.	+ Install
Package Dependencies: squidguard-1.4_15 pfSense-pkg-squid-0.4.45_5			

Dans « Available Packages ». rechercher les packages liés à Squid

pfSense COMMUNITY EDITION System Interfaces Firewall Services VPN Status Diagnostics Help

System / Package Manager / Package Installer

Installed Packages Available Packages Package Installer

Confirmation Required to install package pfSense-pkg-squid.

Confirm

0

pfSense is developed and maintained by Netgate. © ESF 2004 - 2021 View license.

Procéder à l'installation des packages

← → ↻ 172.16.1.153/pkg_mgr_install.php ☆ Rechercher

pfSense COMMUNITY EDITION System ▾ Interfaces ▾ Firewall ▾ Services ▾ VPN ▾ Status ▾ Diagnostics ▾ Help ▾

System / Package Manager / Package Installer ?

Please wait while the installation of **pfSense-pkg-squid** completes.
This may take several minutes. Do not leave or refresh the page!

Installed Packages Available Packages Package Installer

Package Installation

```
(tmispack: 0.10.1 [pfSense]
pfSense-pkg-squid: 0.4.45_5 [pfSense]
squid: 4.15 [pfSense]
squid_radius_auth: 1.10 [pfSense]
squidclamav: 7.1 [pfSense]
unzoo: 4.4_2 [pfSense]

Number of packages to be installed: 14

The process will require 24 MiB more space.
6 MiB to be downloaded.
[1/14] Fetching pfSense-pkg-squid-0.4.45_5.txz: ..... done
[2/14] Fetching squidclamav-7.1.txz: ..... done
[3/14] Fetching c-icap-0.5.8,2.txz: ..... done
[4/14] Fetching cyrus-sasl-2.1.27.1.txz: ..... done
[5/14] Fetching brotli-1.0.9,1.txz: .....|
```

0

← → ↻ 172.16.1.153/pkg_mgr_install.php ☆ Rechercher

pfSense COMMUNITY EDITION System ▾ Interfaces ▾ Firewall ▾ Services ▾ VPN ▾ Status ▾ Diagnostics ▾ Help ▾

System / Package Manager / Package Installer ?

pfSense-pkg-squid installation successfully completed.

Installed Packages Available Packages Package Installer

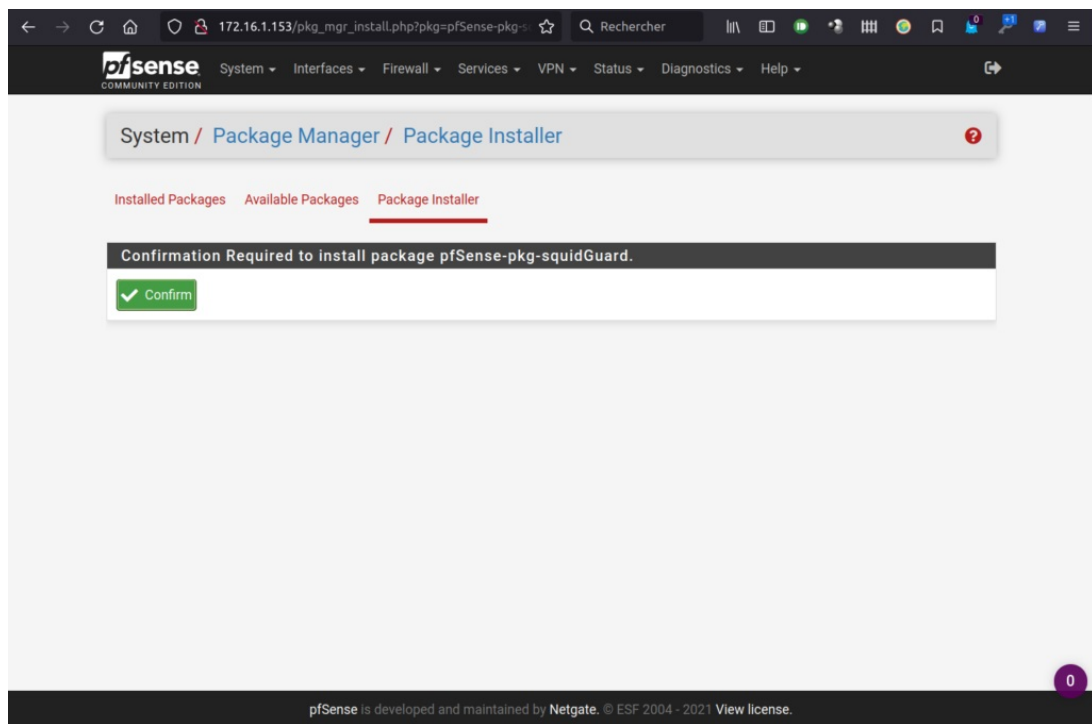
Package Installation

```
make sure to check your Squid configuration against the 3.4 default
configuration file /usr/local/etc/squid/squid.conf.sample.

/usr/local/etc/squid/squid.conf.documented is a fully annotated
configuration file you can consult for further reference.

Additionally, you should check your configuration by calling
'squid -f /path/to/squid.conf -k parse' before starting Squid.
=====
Message from pfSense-pkg-squid-0.4.45_5:

--
Please visit Services - Squid Proxy Server menu to configure the package and enable the proxy.
>>> Cleaning up cache... done.
Success
```



Et voilà...

🕒 Révision #1

★ Créé 25 août 2024 12:58:58 par Marc Leroi

✎ Mis à jour 26 août 2024 12:59:46 par Marc Leroi